

Passage Two

Questions 61 to 65 are based on the following passage.

Early decision — you apply to one school, and admission is binding — seems like a great choice for nervous applicants. Schools let in a higher percentage of early-decision applicants, which arguably means that you have a better chance of getting in. And if you do, you're done with the whole agonizing process by December. But what most students and parents don't realize is that schools have hidden motives for offering early decision.

Early decision, since it's binding, allows schools to fill their classes with qualified students; it allows admissions committees to select the students that are in particular demand for their college and know those students will come. It also gives schools a higher yield rate, which is often used as one of the ways to measure college selectivity and popularity.

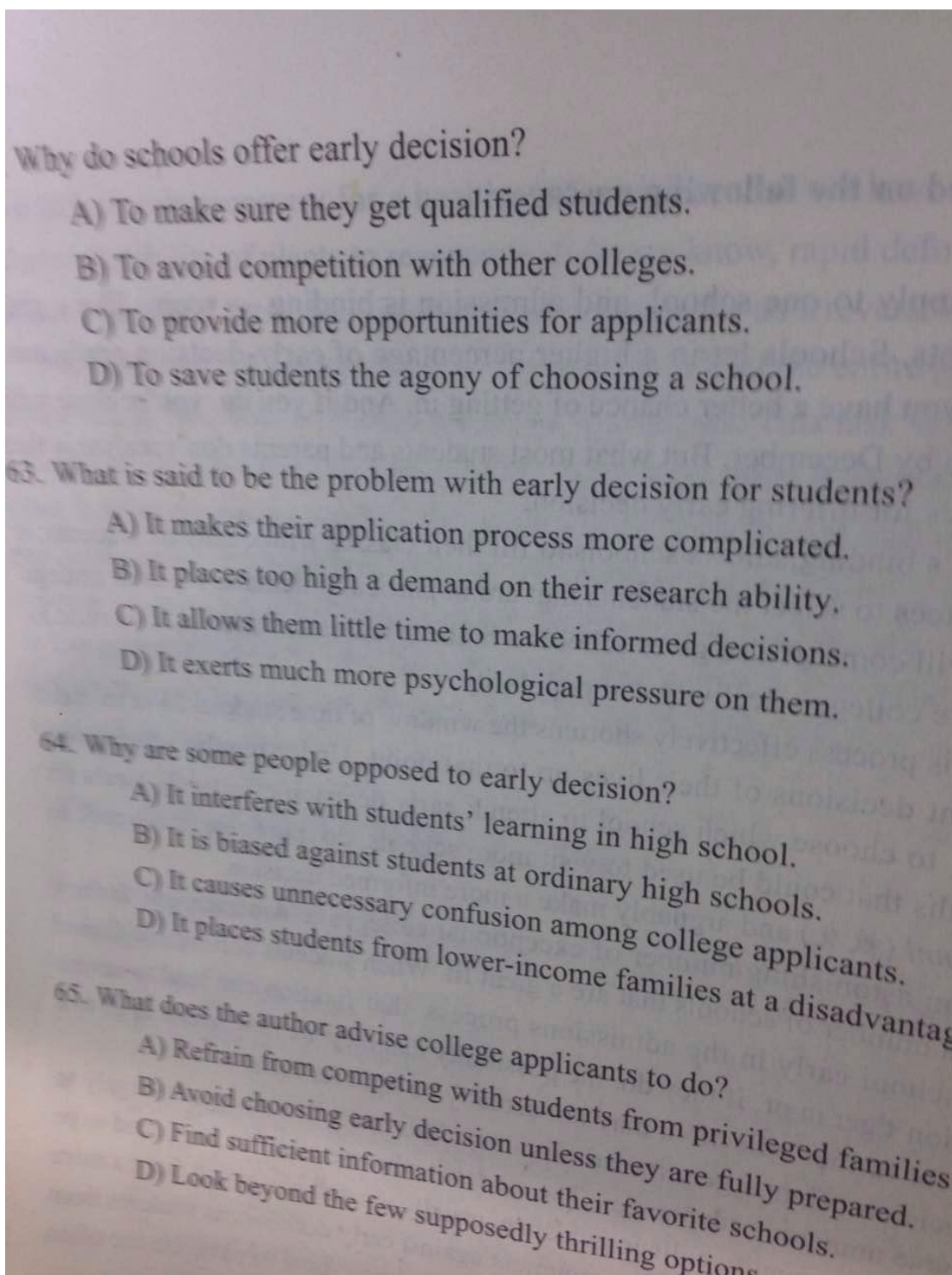
The problem is that this process effectively shortens the window of time students have to make one of the most important decisions of their lives up to that point. Under regular admissions, seniors have until May 1 to choose which school to attend; early decision effectively steals six months from them, months that could be used to visit more schools, do more research, speak to current students and alumni (校友) and arguably make a more informed decision.

There are, frankly, an astonishing number of exceptional colleges in America, and for any given student, there are a number of schools that are a great fit. When students become too fixated (专注) on a particular school early in the admissions process, that fixation can lead to severe consequences. If they do, the possibility that they are now bound to go to a school that is not in or, if they do, the possibility that they are now bound to go to a school that is not actually be right for them.

Students who have done their research and are confident that their favorite schools, the early-decision system needlessly and prematurely closes the door to a wide range of options. Students who haven't yet done enough research, or who are still constant favorite schools, the early-decision system needlessly and prematurely closes the door to a wide range of options. Students who have done their research and are confident that their favorite schools, the early-decision system needlessly and prematurely closes the door to a wide range of options.

注意：此部分试题请在答题卡2上作答。

61. What are students obliged to do under early decision?
- A) Look into a lot of schools before they apply.
 - B) Attend the school once they are admitted.
 - C) Think twice before they accept the offer.
 - D) Consult the current students and alumni.



61-65. BACDC